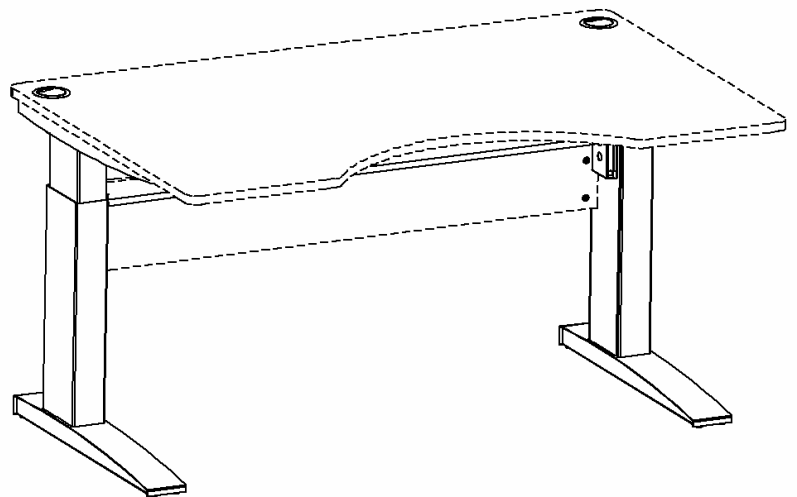
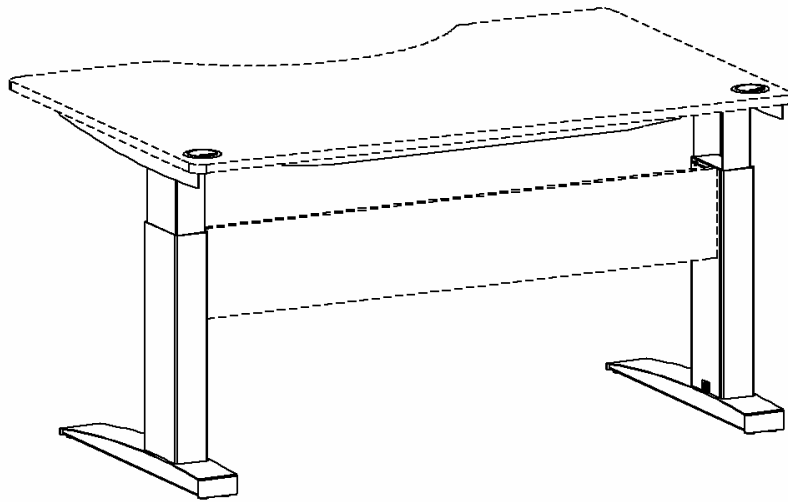


# Documentation

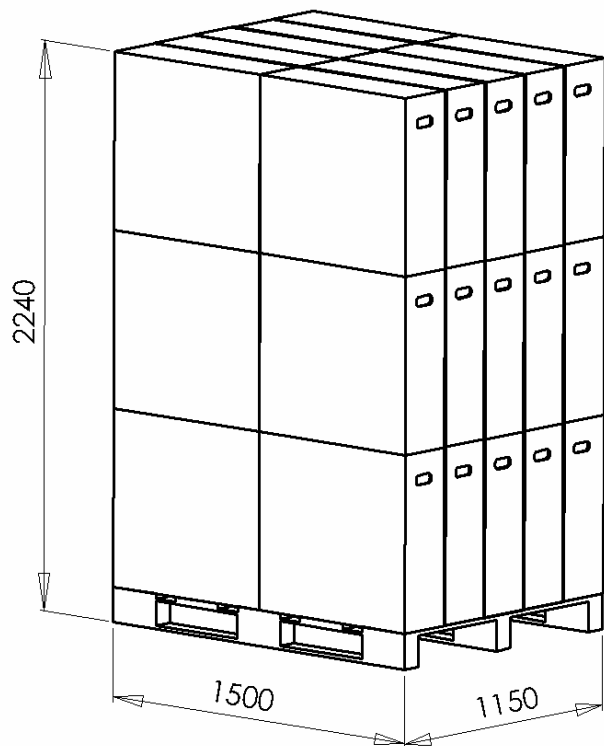
## electric leg-set model DF013



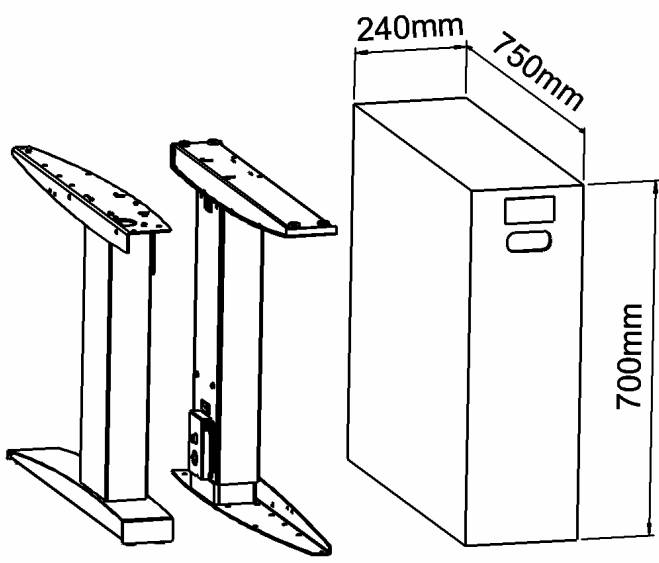
**Table of contents**

Packing details	page 3
Main measures and specifications	page 4
Specification, wooden parts	page 5
Assembly and use	page 7
Component specifications	page 8

**Packing details**

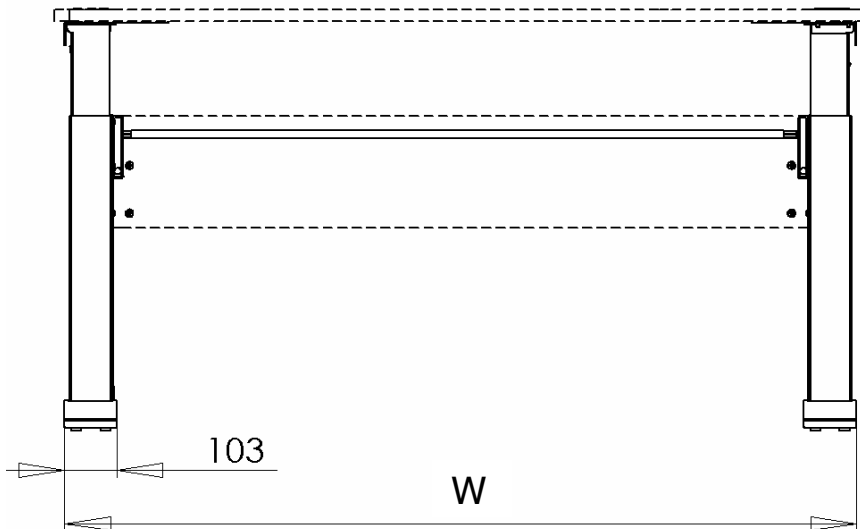
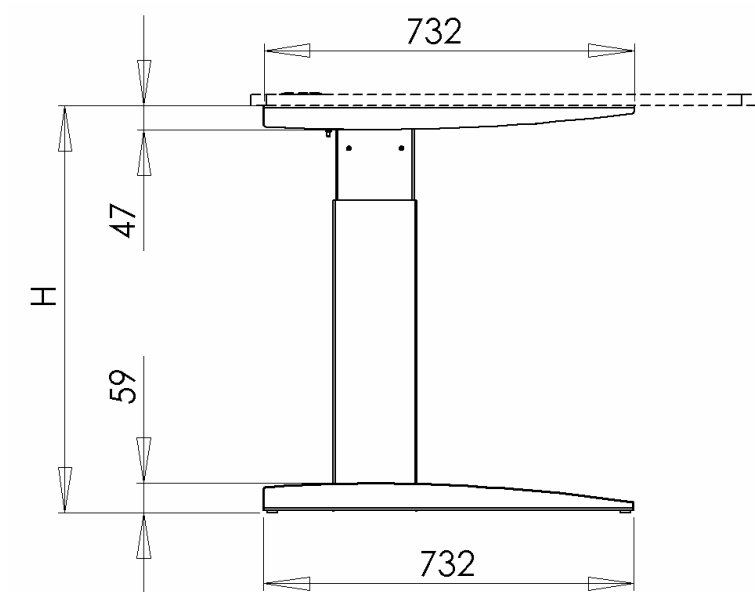


30 pcs.  
1140 kg



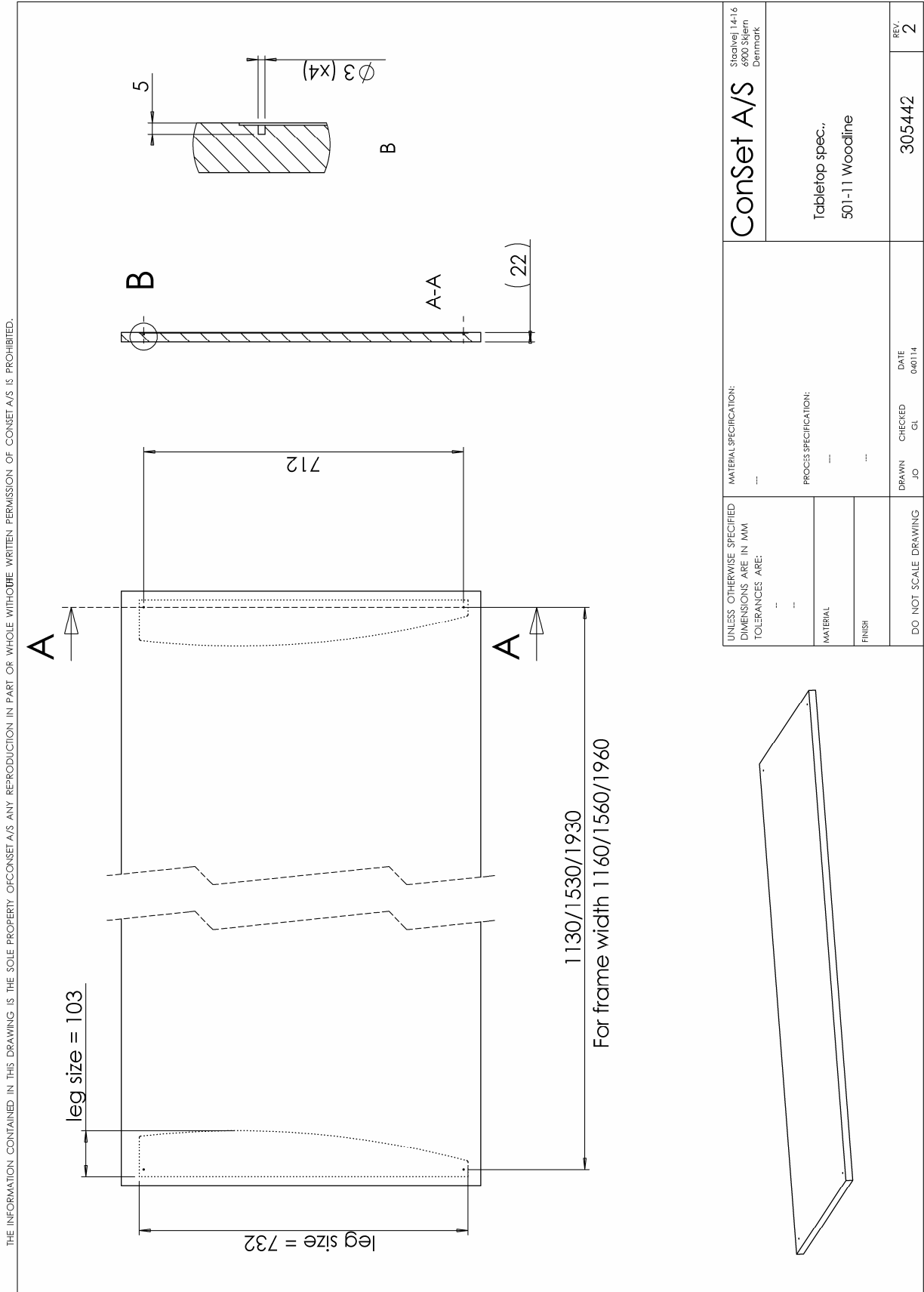
38 kg

Main measures and specifications

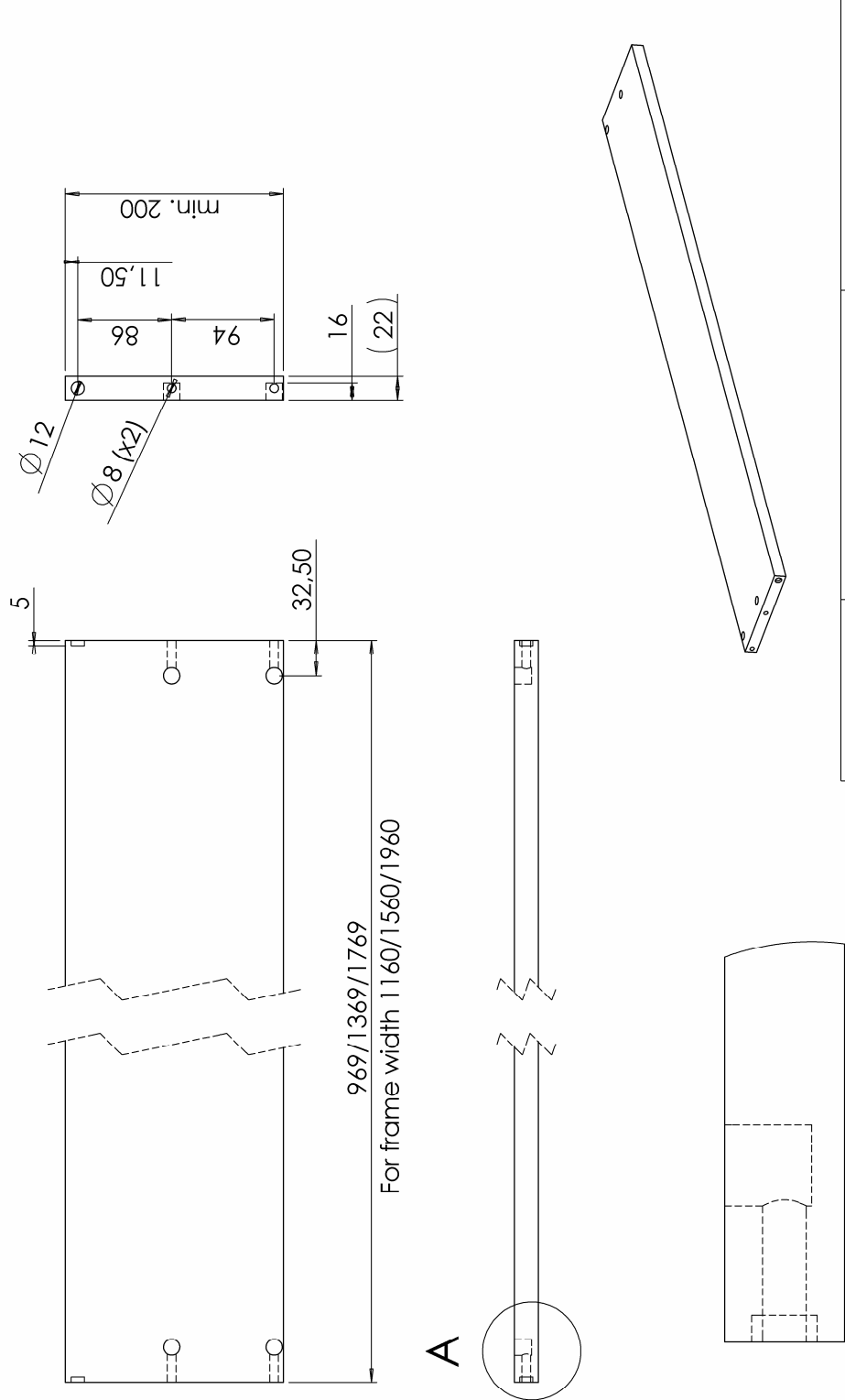


H (height), frame only	63 - 120cm
W (width)	Xx – xx cm
Lifting capacity, frame	100 kg
Speed	25 mm/sec

Specification, wooden parts



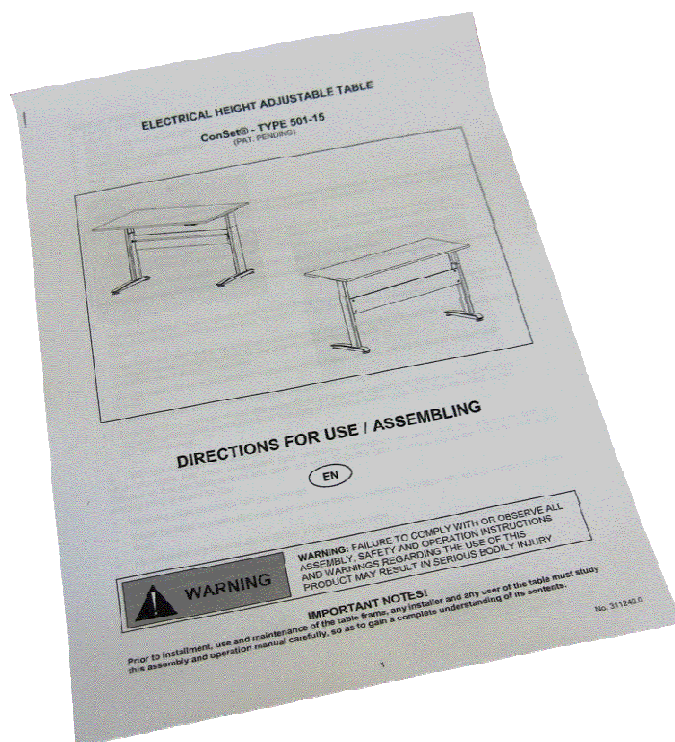
THE INFORMATION CONTAINED IN THIS DRAWING IS THE SOLE PROPERTY OF CONSET A/S ANY REPRODUCTION IN PART OR WHOLE WITHOUT THE WRITTEN PERMISSION OF CONSET A/S IS PROHIBITED.



UNLESS OTHERWISE SPECIFIED DIMENSIONS ARE IN MM TOLERANCES ARE:	MATERIAL SPECIFICATION:	Conset A/S	Staalvej 14-16 6600 Skjern Denmark
	PROCESS SPECIFICATION:		
MATERIAL	---	DRAWN	DATE
FINISH	---	CHECKED	04/01/14
DO NOT SCALE DRAWING	JO	GL	305432
			REV. 2

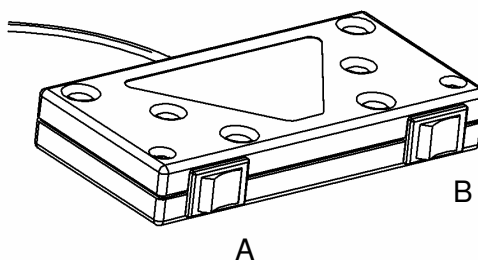
## Assembly and use

Along with all products a “Direction for assembly and use” is delivered. In this you will find a detailed description of the way of assembly.



After the frame has been mounted the chosen tabletop is mounted and the operation unit will be possible to fix at the bottom side of the tabletop. This operation unit has two rocker switches.

With rocker switch A and B it is possible to move the tabletop up and down and can be stopped at all levels. For safety reasons it is necessary to push both buttons at the same time for moving the table up and down.



**Component specifications**

Metal sheet parts:	St 37-2
Gear parts:	St 70-2
Gear motor:	CSE 24V 300047
Power supply:	60 W AC Power Transformer Consumption: 60 Watts; Standby: 0,01 Watts
Plastic components:	PEHD, PA6
Surface treatment	Visible metal parts powder coated in black, RAL 9004 or "alu" colour RAL 9006 Non visible metal parts are surface treated (e.g. zinc plated)