

Documentation

Electric Flat Lift model TS460

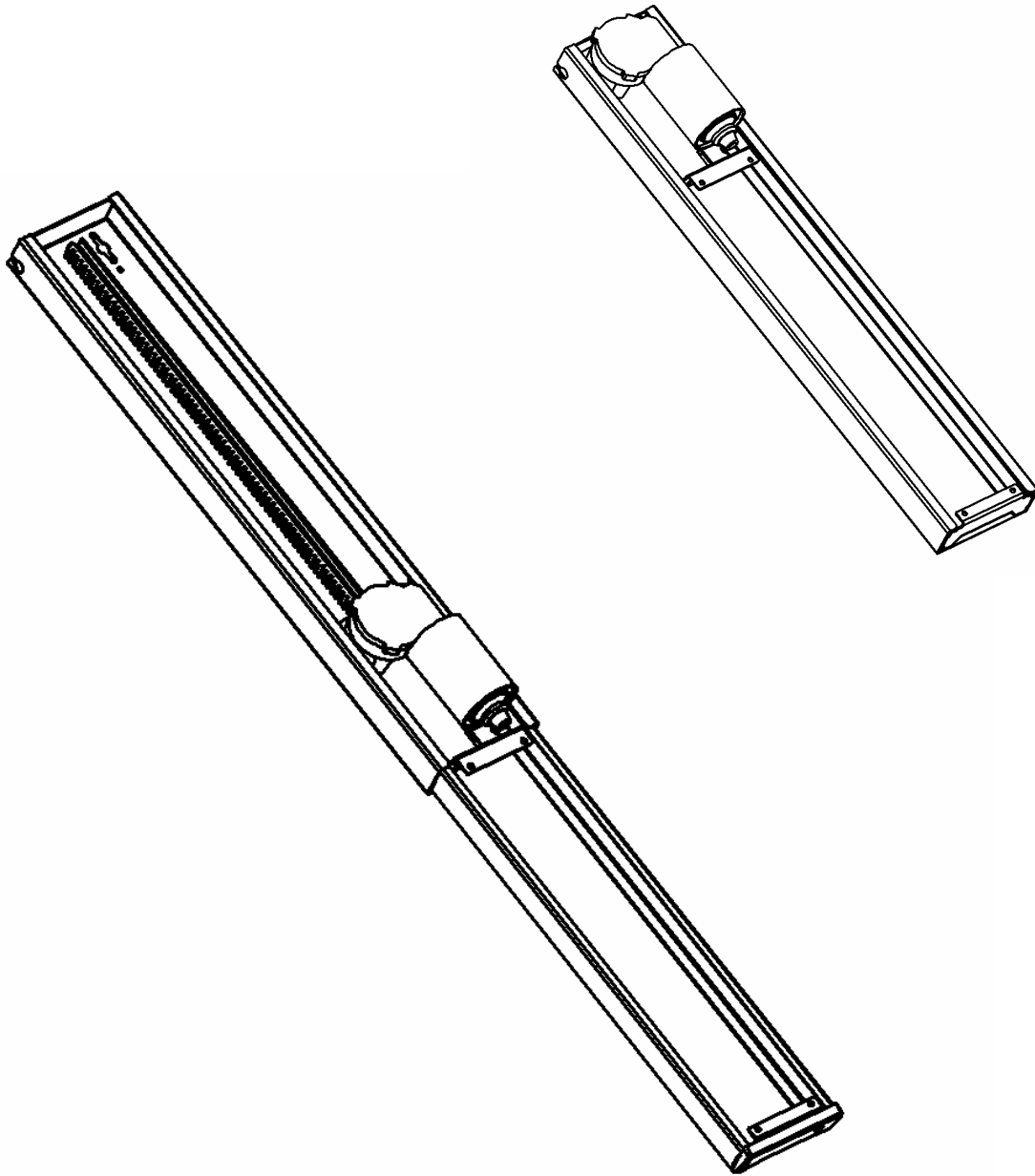
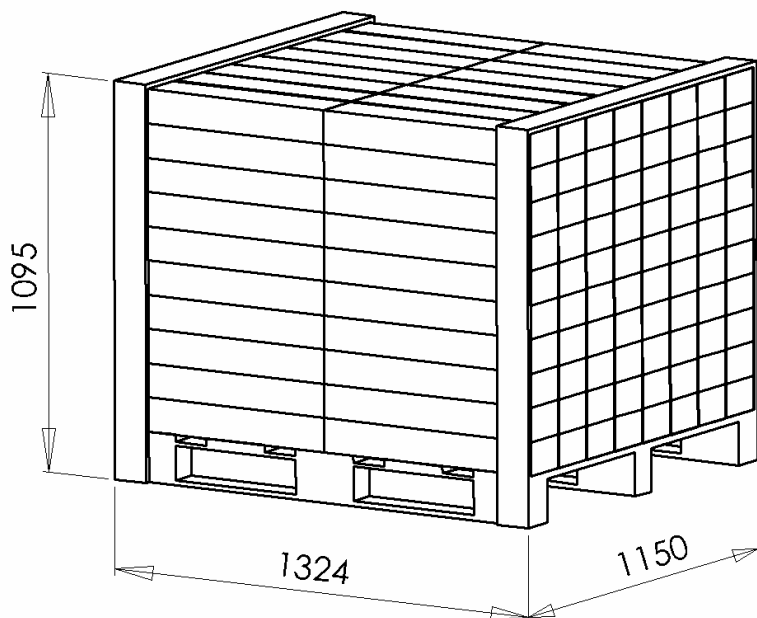


Table of contents

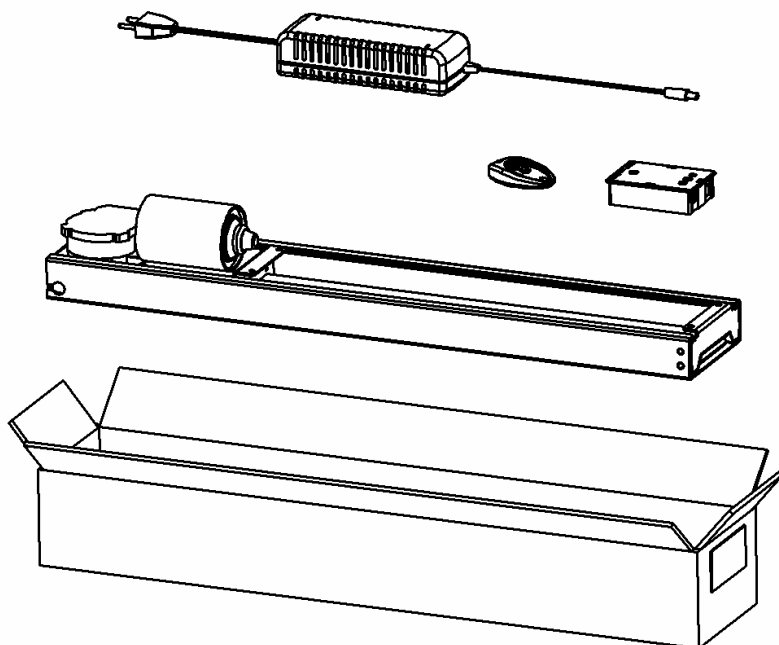
Packing details	page 3
Main measures and specifications	page 4
Assembly and use	page 5
Component specifications	page 6

Technical specifications



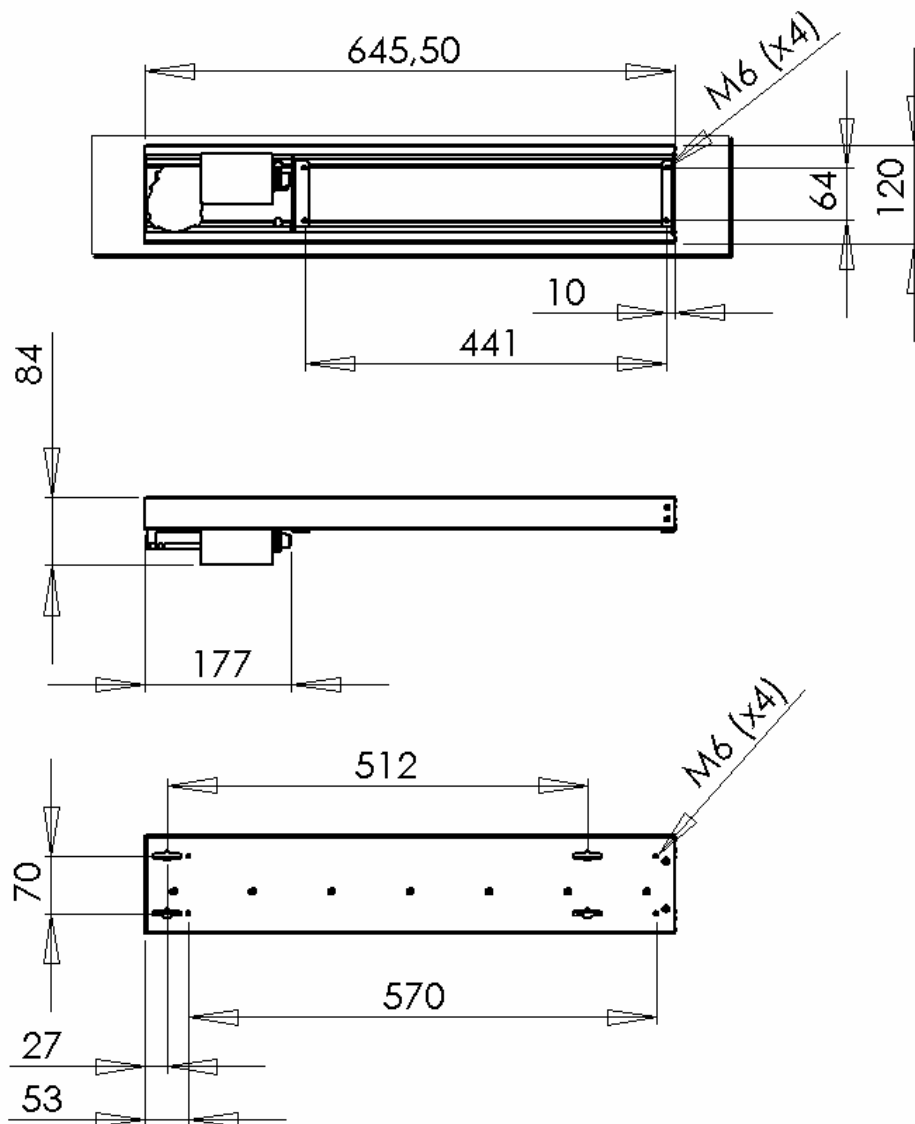
160 pcs.

1008 kg



6,3 kg

Main measures and specifications

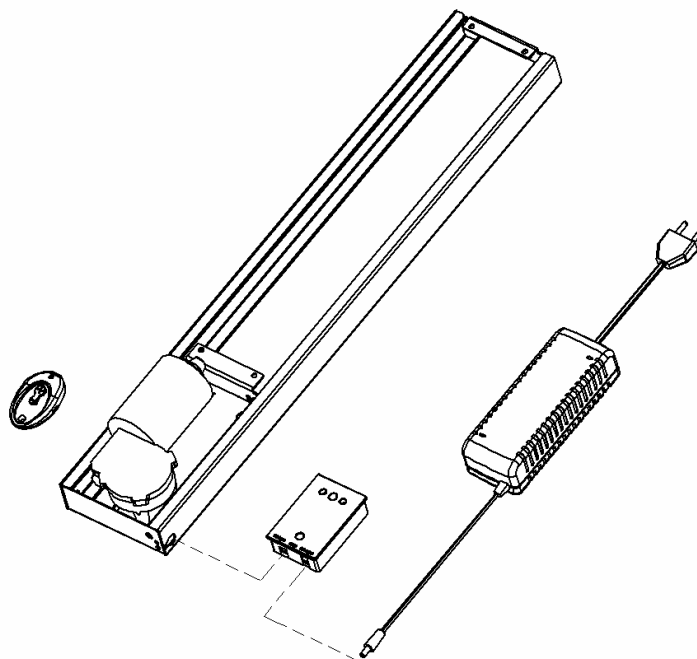


Stroke	460 mm
Lifting capacity	50 kg
Speed	25 mm/sec

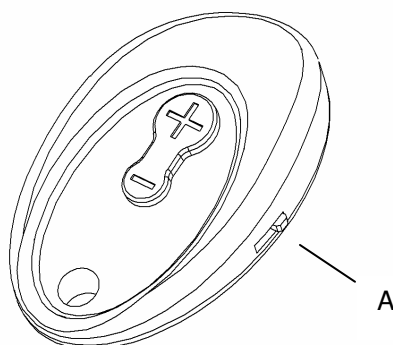
If further documentation needed, please ask your dealer for dwg documentation for the different kind of models.

Assembly and use

After installation of the mechanism, the electrical components can be connected. All wires have DC jacks and since using different types (size- male/female) only the correct connection will be possible to make.



The mechanism now will be possible to operate up and down using the supplied remote unit. Pushing “+” and the lift will expand. At the side of the remote a small switch is located. By switching this the “+” and “-“ will not be possible to use (safety reasons).



Component specifications

Metal sheet parts:	St 37-2
Gear parts:	St 70-2
Gear motor:	CSE 24V 300047
Power supply:	100 W AC SMPS Power Transformer Consumption: 100 Watts; Standby: 0,01 Watts
Plastic components:	PEHD, PA6
Surface treatment	Visible metal parts powder coated in "alu" colour Non visible metal parts are surface treated (e.g. zinc plated)